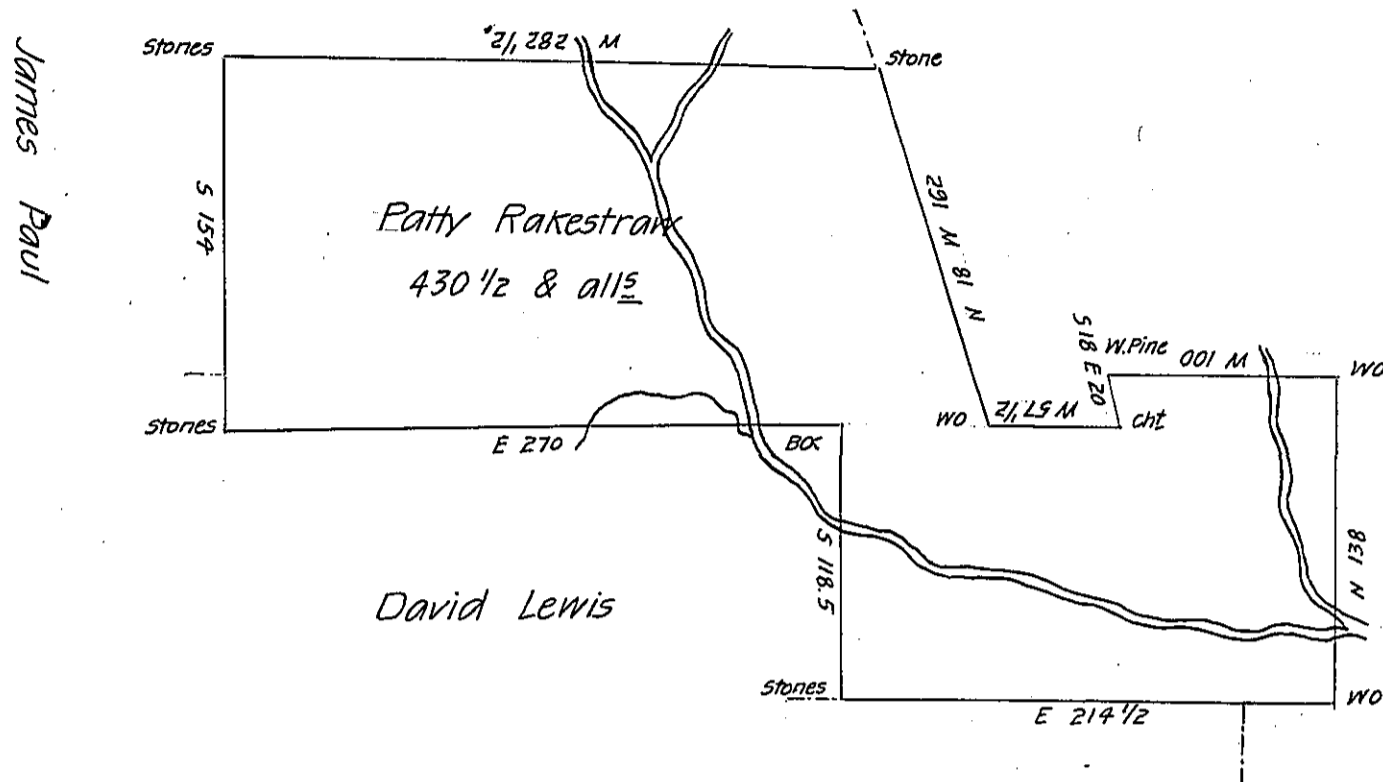


James Paul



Ann Beaven

By virtue of a warrant dated 10<sup>th</sup> of April 1793 Surveyed the 2<sup>d</sup> of April 1794 unto Patty Rakestraw the above described tract of four hundred and thirty acres and 80 perches and allowance of Land Situated on the Hunlocks Creek in Luzerne County

By W<sup>m</sup> Montgomery D. S<sup>r</sup>

To Daniel Brodhead Esq<sup>r</sup>

Surv<sup>r</sup> Gen<sup>l</sup> of Pensylv<sup>a</sup>

Note- This tract was previously returned for Timothy Lewis but by Judg<sup>t</sup> of Board decided to belong to the above Patty Rakestraw. Certify<sup>d</sup> this 22<sup>d</sup> April 1794.

W<sup>m</sup> Montgomery D. S<sup>r</sup>

N-3

IN TESTIMONY that the above is a copy of the original remaining on file in the Department of Internal Affairs of Pennsylvania, made conformably to an Act of Assembly approved the 16th day of February, 1833, I have hereunto set my Hand and caused the Seal of said Department to be affixed at Harrisburg, this twentieth day of September 1906.

*Leaac R. Brown*  
Secretary of Internal Affairs